

MONTHLY MEMBERSHIP PROGRESS REPORT

LOCATION INDIA

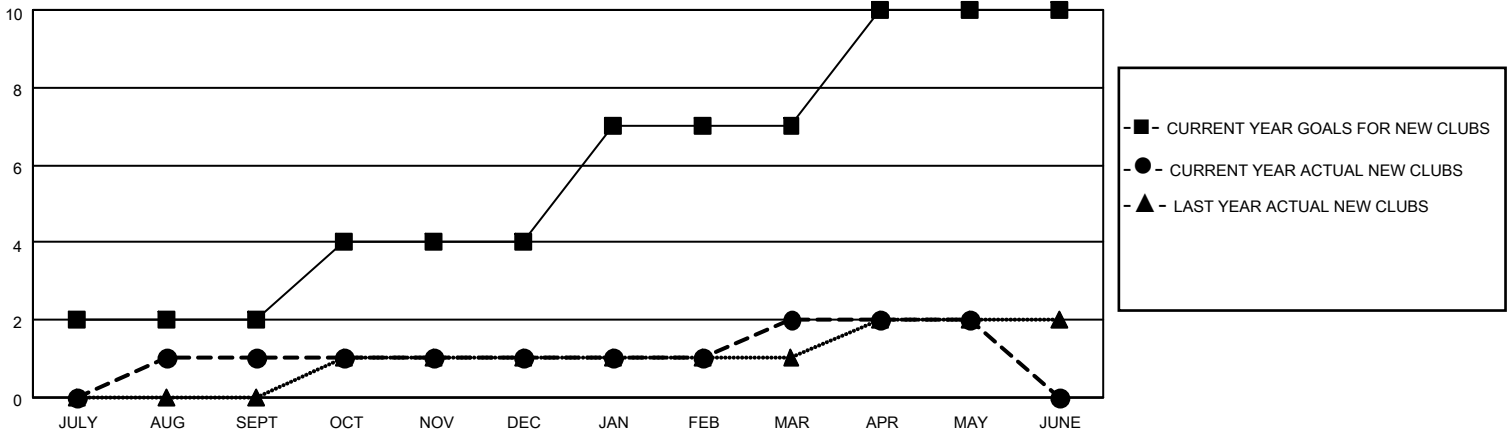
District 317 C

Results as of: 5/31/2023

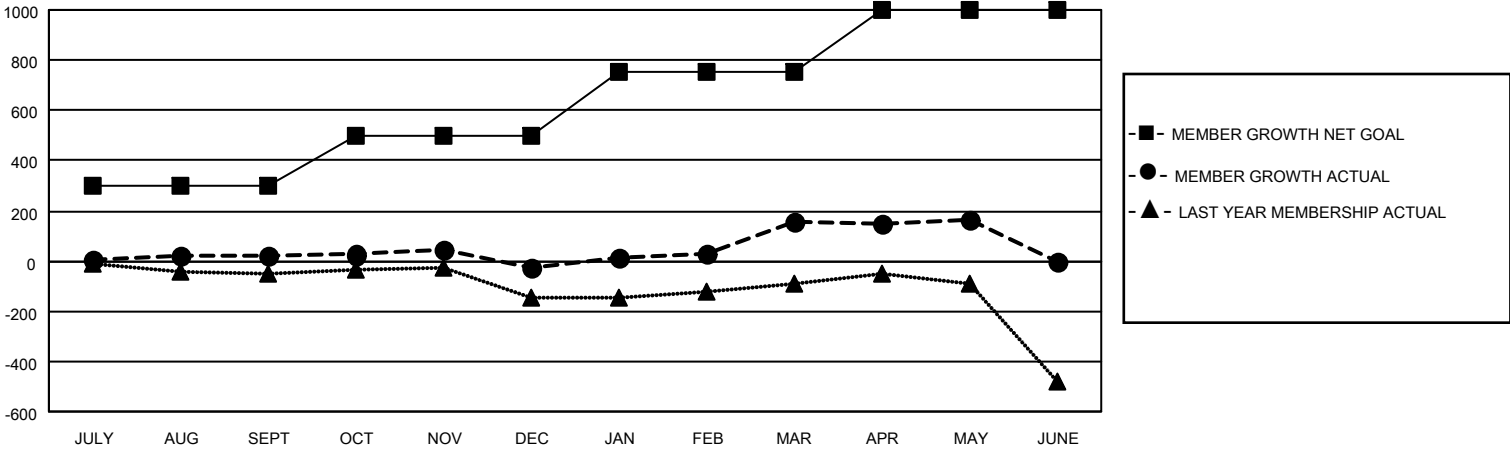
Clubs			
RESULTS FOR 2022-2023			
QUARTER	NEW CLUB GOAL	NEW CLUBS	DROPPED CLUBS
JULY/AUG/SEPT	2	1	0
OCT/NOV/DEC	2	0	0
JAN/FEB/MAR	3	1	1
APR/MAY/JUNE	3	0	0

Members			
RESULTS FOR 2022-2023			
QUARTER	MEMBER GROWTH NET GOAL	MEMBER GROWTH ACTUAL	DROPPED MEMBERS ACTUAL (including transfers)
JULY/AUG/SEPT	300	102	70
OCT/NOV/DEC	200	73	121
JAN/FEB/MAR	250	215	28
APR/MAY/JUNE	250	65	50

GOALS AND ACTUAL NEW CLUBS CUMULATIVE



GOALS AND ACTUAL MEMBERS CUMULATIVE



DROPPED CLUBS: 1	
DROPPED MEMBERS	
DECEASED	7
CLUB CANCELLED	12
OTHER	250
TOTAL	269

77 CLUBS OF 118 ADDED 1 OR MORE NEW MEMBERS

[CLICK HERE FOR CUMULATIVE MEMBERSHIP DATA](#)

<u>GENDER DISTRIBUTION</u>	
MALE	2,503 (78.76%)
FEMALE	675 (21.24%)
NON BINARY	0 (0.00%)
PREFER NOT TO ANSWER	0 (0.00%)
TOTAL FAMILY UNIT MEMBERS	1,127
FAMILY MEMBERS PAYING HALF DUES	621